



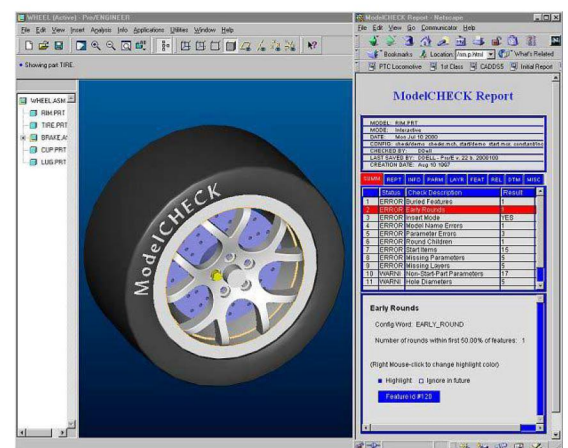
ModelCheck using Creo Parametric 2.0

Course Length 2 Days

Overview

In this course, you will learn how to use ModelCheck. ModelCHECK evaluates Creo Parametric parts, assemblies, and drawings to ensure that they adhere to a company's modeling standards and best practices. If an exception to these conventions is detected, users are notified of the inconsistency, given tools to identify the problem within the solid model, and can often make a correction automatically from the familiar web-based ModelCHECK interface.

ModelCHECK facilitates the work of design team engineers by letting users create superior models that are well suited for reuse in downstream applications.





Course Objectives

- Can help you adhere to your company's standards (Parameters, Layers, etc)
- Facilitates Reuse of Models
- Can assist with Problem Resolution, Education, and Online Advice
- Can monitor improvement Understand the manufacturing process

Prerequisites

- Introduction to Creo Parametric – Fundamentals (Web Based Training) or equivalent experience

Audience

- This course is intended for engineers using Creo Parametric
-